

Laura Watson

DESIGNER & ACCOUNT MANAGER //
ARTIST ON THE SIDE

Adding visible value

Logo

Developing the character and identity for each client or campaign.

Illustration

Bespoke illustrations to suit any brand style.

Website

Refreshes, rebrands, page creation.

Photography

Set styling, post-production.

Print

Advertisements, Brochures, leaflets

Event

Exhibition stand, marketing materials, support & organisation

Teamwork

Clients

Maintaining relationships,
managing expectations,
meeting requests

& creative

Ideas

Input, concept creation

leadership

Management

Content planning, strategy,
prioritising workloads,
overseeing projects

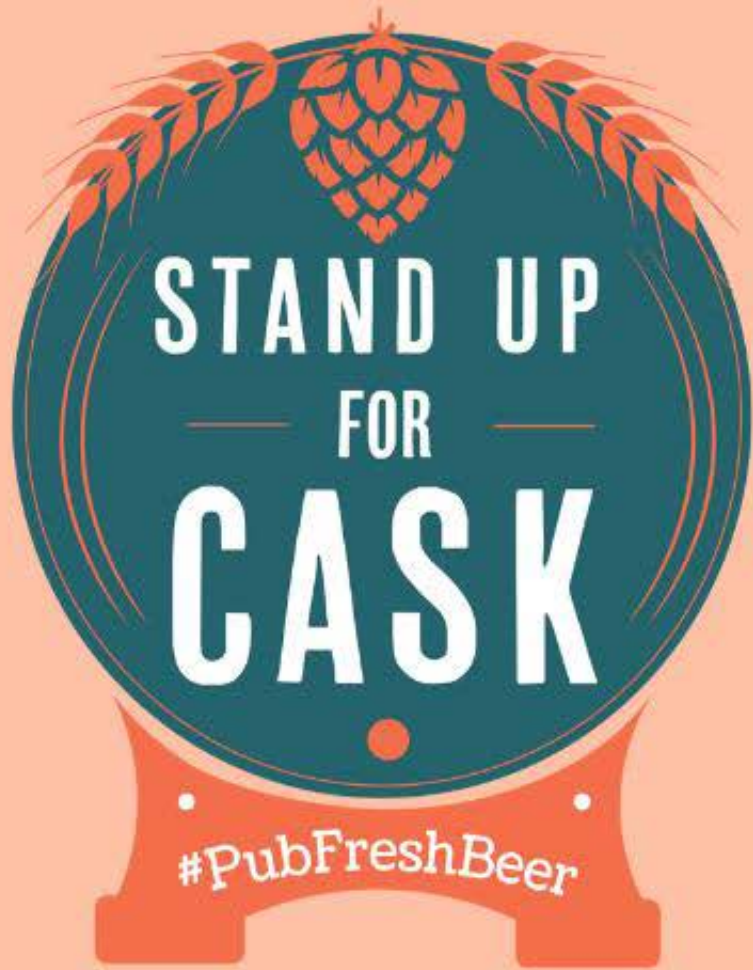
National Campaign

Logo design

Illustrations

Social assets

Coverage



Logo design



Social media assets

Coverage



Tom Kerridge 
@ChefTomKerridge

Cask beer is a uniquely British product that can only be enjoyed in our pubs. I am joining the campaign to Stand Up For Cask and help people throughout the Country enjoy [#PubFreshBeer](#)



Websites





Mysteries of Mistle Saturday 1st July

What's on



Station Hair and Beauty

Start a coffee from the Station Kiosk and head to the garden for activities.



Acorn Village

- Get hands on and take cake home – apply this to their new kitchen for all activities. The Green Centre.
- Listen the offer for assistance to use some exciting prizes.
- Activities will be taking place in the Creative Craft Centre.
- Take a break with a cup of coffee and piece of cake in the beautiful grounds of the Acorn Village Coffee Shop/Walkers Garden.
- Get involved with some just therapy by spending all the animals in the Craft Centre.
- They can also press/press with the soap, come and see it in action.
- Support adults with learning disabilities by making a purchase in our water Charity Shop.



Cooper's Gallery

Explore the high quality arts and crafts from local artists and designers including members of Barbic Craft Society: ceramics, textiles, jewellery in paper, fabric, porcelain and metals, prints, paintings, sculptures, painted wooden furniture, large range of Judith Price books and cards, James Quill prints, books by Robert Green in the coastal area and its boats.

The new film by David White on Mistle, Stonehenge and Landfill is also available and includes filming inside the Workshop.

Exhibition

Stand design

Project management

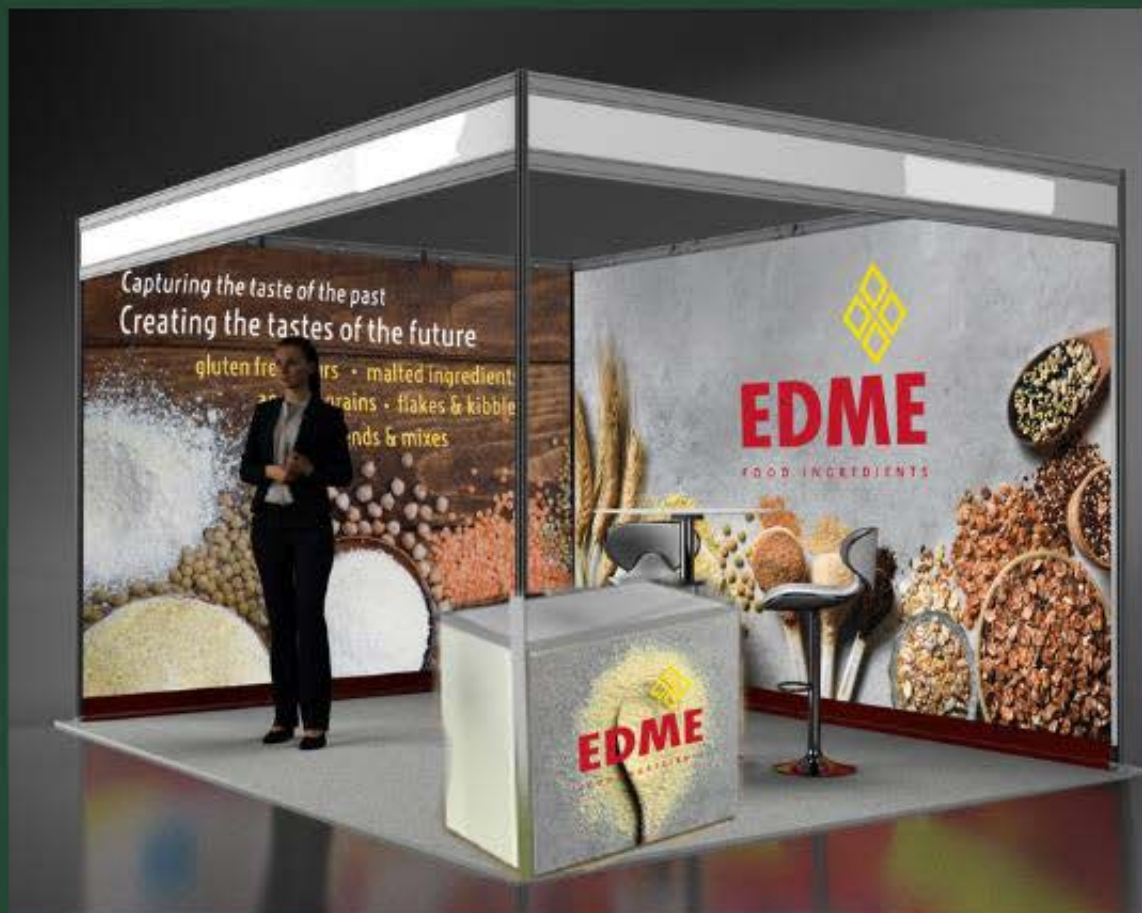
Client relations

Print

Supplier sourcing

Marketing materials

Stand design



Feather flags



Marketing materials



A5 leaflet



Product labels

Music festival identity

Brand creation

Logo design

Line-up poster

Illustrations

Social assets



Logo design

Line up poster

Illustrations



Social assets



Food styling & photography

Idea generation

Set-up

Post-production using Photoshop





Brochure design

Content

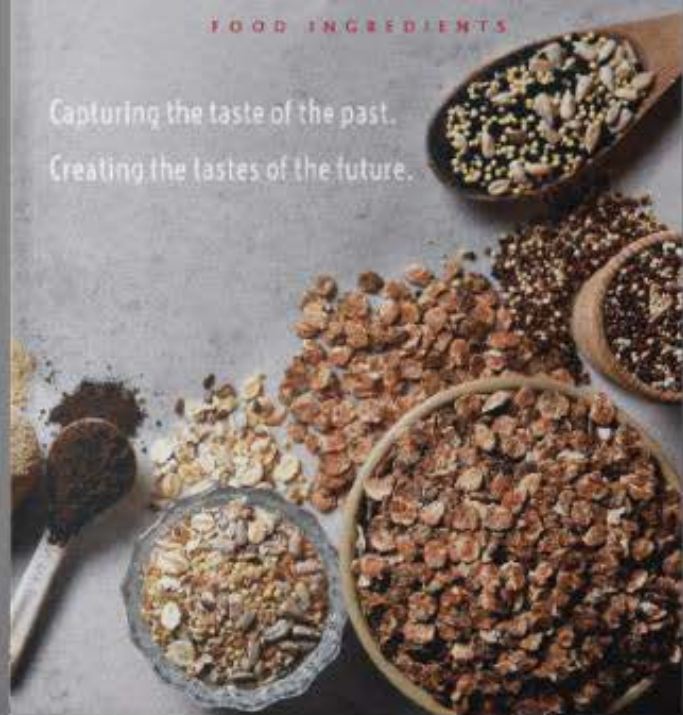
Infographics

Page layout & structure

Print logistics



Capturing the taste of the past.
Creating the tastes of the future.



We are
specialists in **wholegrain**,
masters of **malted** ingredients,
pioneers of **sprouted** ingredients, and
champions of **gluten free flours**

At EDME, we combine the benefits of experience and tradition with the innovative and adaptable mindset needed to stay at the forefront of a fast-changing industry.

We work with farmers to source the finest raw materials and develop them into exciting new ingredients for the food industry.

At the other end of the food chain, we will work with you to help ensure your products meet the ever-expanding demand of modern consumers.



EDME

has distributors in

- Western Europe
- Eastern Europe
- Parts of Asia
- Parts of Africa
- Middle East
- Oceania
- Areas for future development

We are
part of the **Anglia Maltings** family.
Together we have been producing
natural **nutritious** ingredients
since **1870**, have **9** factories in Europe,
produce over **500,000** tonnes pa,
and have a turnover of **£170m**.



Icons / infographics

Illustrating

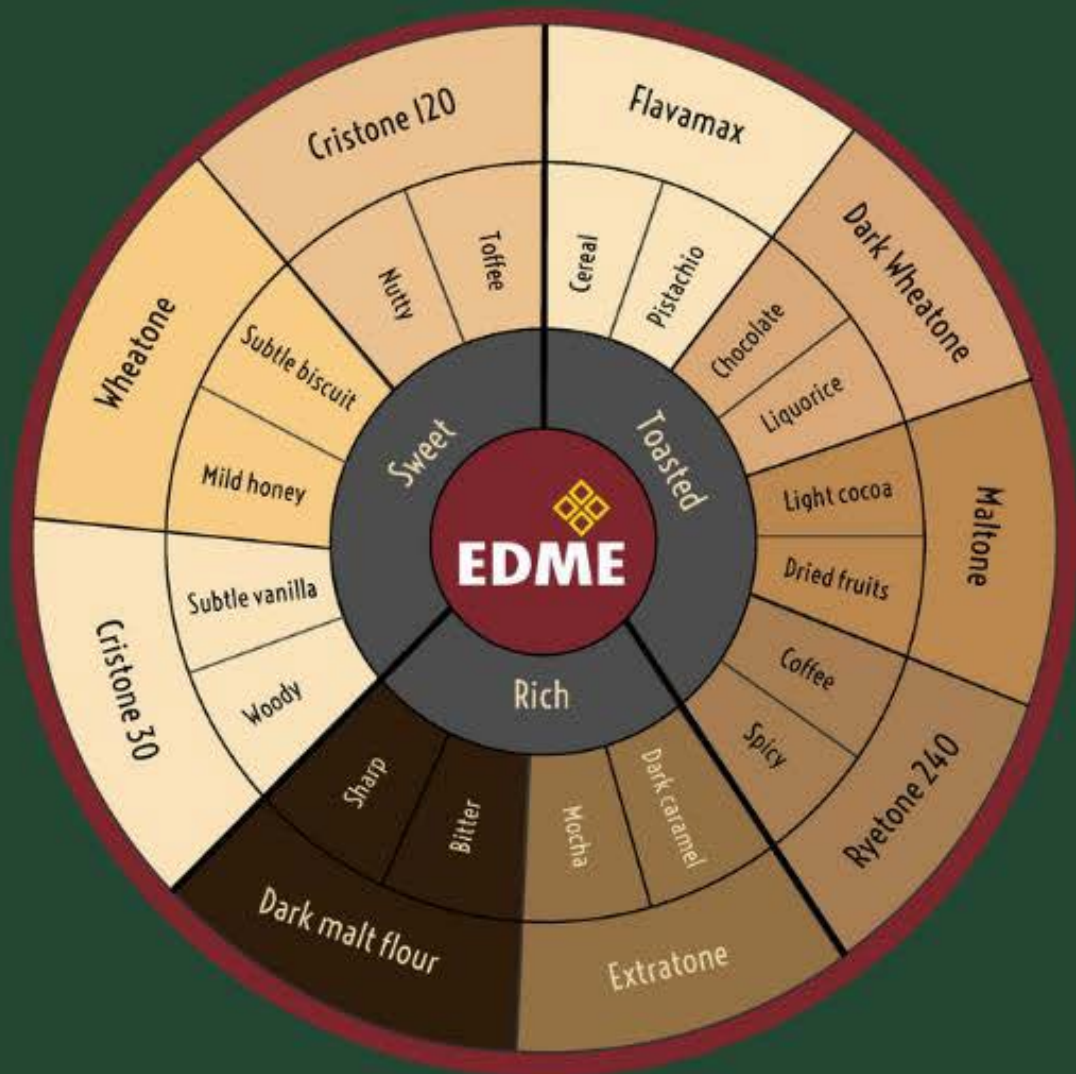
Structure

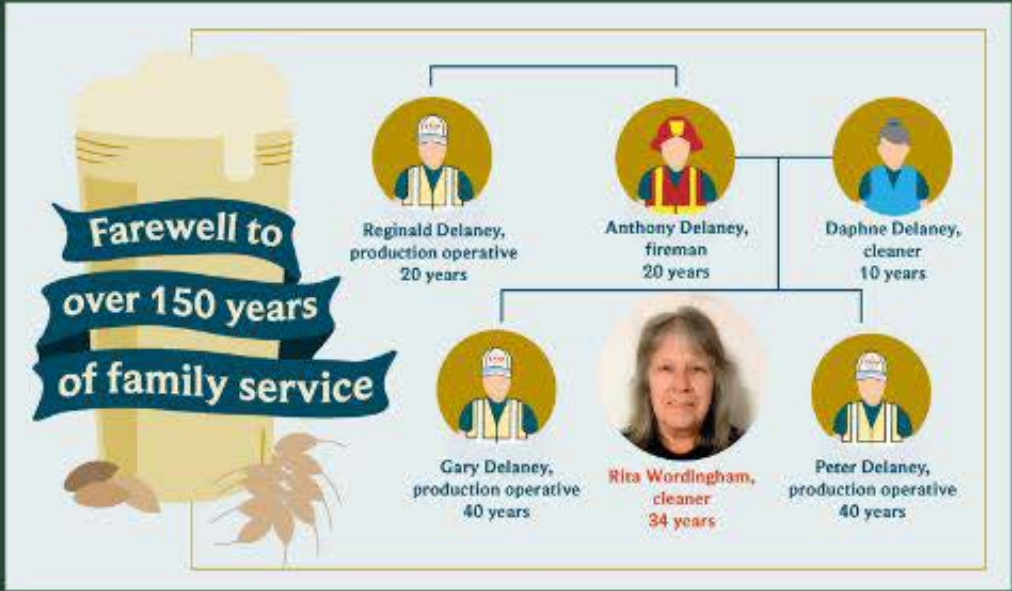
Concise messaging

Clear processes

WELCOME TO MISTLEY
Our Home Since 1881







Print advertising

Idea generation

Illustrations

Concise messaging

Print

Layout on Illustrator / InDesign

EDME ad artwork bakery business.pdf 1 18/05/2023 15:59



NATURAL INGREDIENTS
WORTH YOUR ENERGY

info@edme.com  **EDME**
FOOD INGREDIENTS www.edme.com





Benefit from sprouted ingredients. Take advantage of ancient grains.

Do both together with the new WholeSoft® Sprouted & Ancient range.

BUCKWHEAT
High in fibre



EINKORN



QUINOA



EMMER



Soft-chew texture

Clean label

Visible value

Enhanced flavour

Natural & nutritious
SPELT & QUINOA



OATS

sales@edme.com

01206 393 725

www.edme.com

@edmeingredients

18 month shelf life unopened

EDME



Become an Apprentice
Laboratory Technician.

All the ingredients for a great career.



Learn
new skills.

- ✓ Achieve qualifications.
- ✓ Test your abilities.
- ✓ Interact with a friendly team.



Concentrate
your strengths.

Join a local company with an international reputation.

Nutritious food ingredients.
The natural job opportunity. Right here on your doorstep.

Check out full job description & apply by 30th June:

www.edme.com/vacancies



Promotional materials

Idea generation

Illustrations

Concise messaging

Print

Layout on Illustrator / InDesign

Event

Mysteries of Mistley
Trail, Food, and History

Save the date.
Saturday 1st July
10am - 4pm

Official charity:
Acorn Village

www.mysteriesofmistley.co.uk
[@mysteriesofmistley](https://twitter.com/mysteriesofmistley)

Supported by:
Hanningtree
Rotary Club

Do the Trail
Mistley is a wonderful village, with its treasures of architecture, history, scenic views, industry, arts, small business, sports and community. So let's celebrate it.

Explore the local organisations and find out about the unique history that makes Mistley special.

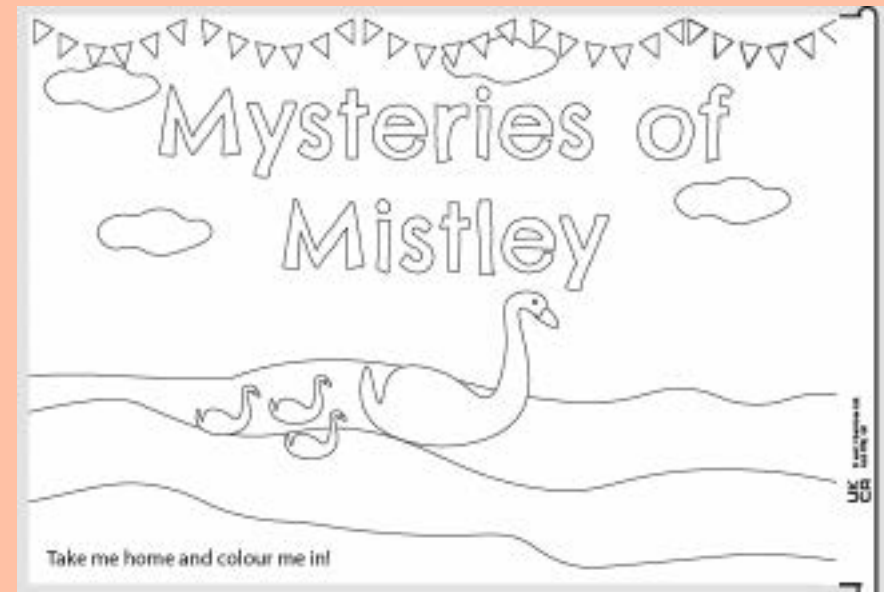
Hunt for Clues
Each venue holds a clue. Head round the trail to find the answers.

Chance of a Prize
Pick up a collector card from EDME and visit each venue for a stamp. Once the card's complete, be in with the chance of a prize.

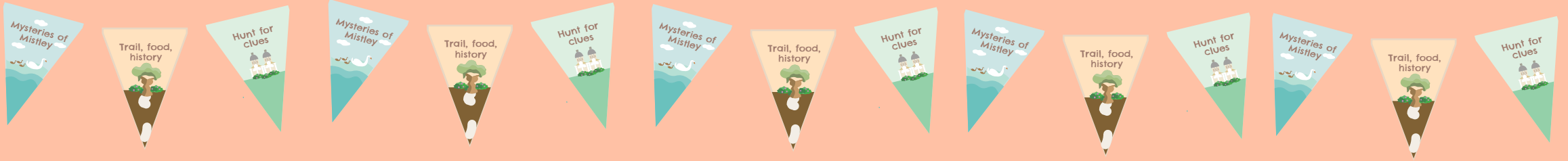
Map Locations:
Mistley RUFC, Old Knobbly, Station Hair and Beauty, Acorn Village, Mistle Cricker Club, Tea at the Quay & Cooper's Gallery, Woodster's Bakery, EDME, Mistley Towers.

*Map is artistic interpretation.
Go to www.mysteriesofmistley.co.uk for more accurate trail map.

Double-page advert



Handheld flag



Bunting



SELL CASK? Then **CASK ALE WEEK** is yours for the taking!

1. PLAN ACTIVITY

beer experiences, ale trails, festivals, food and beer events, tastings...

2. USE LOGO PROUDLY

www.caskaleweek.co.uk/download-logos/

3. GET IN TOUCH

will@redflamecommunications.co.uk



24 SEP - 4 OCT 2020

[f](#) @caskaleweek [i](#) @caskaleweek2019

will@redflamecommunications.co.uk www.caskaleweek.co.uk

Facilitated by..



WOOSTER'S BAKERY

Hand crafted speciality breads, cakes, and pastries.

VISIT US at our shops in Langton Place in Bury St Edmunds and Bardwell (by the windmill)

ORDER ONLINE www.woostersbakery.co.uk
& COLLECT FROM OUR SHOPS

GIVE US A SHOUT info@woostersbakery.co.uk



WOOSTER'S BAKERY

Take a look at the map below and play the wonderfully mediocre game of....

WHERE'S WOOSTER'S?



SHOP

8 Langton Place,
Bury St Edmunds

IP33 1NE

Wednesdays to Fridays:

8am - 4pm

Saturdays:

8am - 1pm

MARKETS

Wednesdays: Bury St Edmunds, IP33 1DB

Fridays: Hadleigh, IP7 5DL

Saturdays: Bury St Edmunds, IP33 1DB
& Wickham Market, IP13 0RF

Congratulations. You found our shop.

Our full range including sourdoughs, pastries, morning buns, malt loaves, cookies & more, can be found here.

Congratulations. You found us at Bury Market.
Selected items from the bakery available here on Wednesdays & Saturdays.



Presentations

Idea generation

Illustrations

Writing

Structuring narrative



Creating lasting partnerships to bring flavour and joy to life



1. Creating

We are creators. We are innovators. We take the best of nature and turn it into flavoursome ingredients.



2. Lasting

We've been here for generations and are in it for the long haul. We tap into traditions and accumulated expertise to capture the taste of the past and create the tastes of the future. Sustainability must lie at the heart of every part of our business.



3. Partnerships

We're all about connecting. We work with farmers, team members, and customers to create great experiences for consumers. We share our technical expertise so that everyone can thrive and grow.



4. to bring flavour

Our transformation of nature's offerings into ingredients allow customers to create products bursting with character and flavour.



5. and joy

There is delight in shared enterprise. The more joy we can generate within our teams, the more happiness we create through our many partnerships - and the ripples that can be felt beyond.



6. to life

We love the fact we are manufacturers. Creators of ingredients, flavour, joy. Our teamwork generates the ingredients for good living. For coming together to break bread, sip beer, form communities - and live life.



**Bags of
Personal Experience**



Home **Family** Community Religion
Identity Belonging Friends

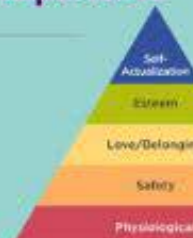
War Persecution Corruption Child Military
No Human Rights No Freedom of Speech
Broken Education **No Prospects**

Ambition **Motivation** **Resilience**



Career Online Connectivity **Home** Mobility
Education **Family** Mobility Friends **Health**
Financial Security Community Human Rights
Social Capital Connections **Experience**

Empty Broad Fears
Nest **Capacity**
Search for
Raison d'Être



Newsletters

Planning

Interviewing

Writing

Infographics

Page layout + structure

Print logistics



Celebrating time at the company

Steve LaPoidevin says "to be a part of a company that has so many long-standing team members is rather remarkable. We have just said goodbye to Trevor Francis, who clocked up 30 years at Mistley Millings, and Paul Williams, who has retired from Crisp Ryburgh in the mid of last year after 38 years. They are part of an astounding line-up of long services.

"The members below are also part of this. Each person has reached considerable amounts of time here at Crisp and have received long service awards. Most of the board would like to give a special thanks and huge gratitude to these members. To give such dedication and time to the company is really admirable."

Kevin Voutt, Lorry Driver - 27 years

Ralph Barleigh, Lorry Driver - 26 years

Martin Moore, UK Planning Manager - 25 years

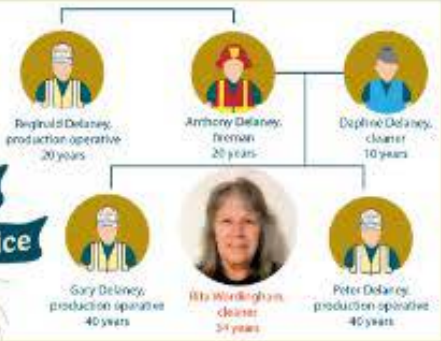
Neil McCrory, Lorry Driver - 25 years

Stewart Ramm, Lorry Driver - 25 years

Julian Cobbs, Ditchingham Site Manager - 25 years

Long Service Awards

Farewell to over 150 years of family service



As part of a family who have between them clocked up 150 years working for Crisp, Rita Worthington has contributed 24 of those years. She is now taking a well-deserved retirement.

"From the very beginning, it's been like being a part of a big family," she says.

She started clearing the mobile cabin offices in the yard of the Crisp Ryburgh site, then moved to the main office when it opened in 1994.

"Compared with the work in the mobile offices, clearing the new buildings was like maintaining a punch card."

A matter of time

"A message that stands out for me is the dedication we had for our 100th anniversary back in 1992 - the first big party I can remember. We had a marquee outside and the whole team got together to join in.

"I was quite concerned to find we were celebrating our 100th anniversary in 2020 and being it, no that can't be right, it's not possible I'm not old enough to be here for both big celebrations! Turns out that with all the company's history, it was linked to a different part of the company timeline - such to my role!"

Think you've done well!

Rita is now going to take this time to sort out the jobs at home that have been put off while she's been working.

"Let's hope she also takes a bit of time to enjoy herself," says Steve LaPoidevin. "She certainly deserves it after all that time here. Rita and her family have always been fantastic team members.

"We wish her and her family all the best for the future, and thank them for their dedication and support."



News at Mistley

Compensation

Paul Kent retired due to poor health in late December after 38 years working at millings in and around Mistley. The depth of his knowledge will be greatly missed. Recruitment for his replacement remains in progress.

Farewell to Ian Clarke

Ian Clarke, production supervisor retired at the end of January 2021. He has been at Mistley for over 40 years. Millings manager, Will Driscoll, thanks him for his contribution over the years. Again, a replacement is currently being sought.

Walking into the next chapter



Jenny Plant started at the company in 1991, working on transport accounts. She got at the information manually, helping with proofing, invoicing and reconciling the books.

She spent 2 and a half years in that role before taking maternity leave. After that, she returned to a part-time admin role in the laboratory until 2006 when she went on to become a lab assistant. She had by this time moved to night school to learn computer skills so soon reverted back to administration, supporting the then technical director, Bruce Adcock, and production director, Andrew Howard.

"When Bruce sadly died and Andrew retired, Jenny continued in 'the cottage' (an annex just off from the main office) supporting various departments with admin duties, and it wasn't long before this became a full time role.

First impressions count

Jenny moved positions to be based at the main reception area because the first point of contact for visitors, couriers, and colleagues old and new.

"When she greeted you, I was instantly put at ease," says Luke. "Jenny has a lovely, warm nature, which made the company seem less daunting, and my interview a little less intimidating. It may seem a simple thing, but it was a feeling aspect, so years later, that memory is still fresh in my mind."

Jenny says, "Being on reception was a great way to make myself out of my shell. I was always meeting and talking to new people from all different kinds of backgrounds.

"Everyone was lovely and easy to get on with. Not to mention, very supportive as well.

"The trick was to make everyone feel welcome and important, regardless of the fact they would be interrupting all the jobs you were trying to get done to various deadlines. It was sometimes a challenge, but one that I loved."

Supportive from the beginning

She adds, "alongside providing a career full of variety and flexibility, Crisp has also been incredibly supportive. I won't forget the help I received when my husband and mother passed away in the same year, and also more recently when I was ill."

"It all encouraged me to keep going and towards 30 years at the company, it has been a lovely place to work. Of course there were ups and downs throughout these three decades, but I have always felt happy and valued - and that is what you want from your work."

"I'm going to use this time to enjoy lots of walking. There's nothing quite like being outdoors and taking in life's simple pleasures."



Commissioned artwork

Portraiture

Still life

Landscapes

Oil painting

Chalk pastels

Graphite

Gouache

NTS Radio

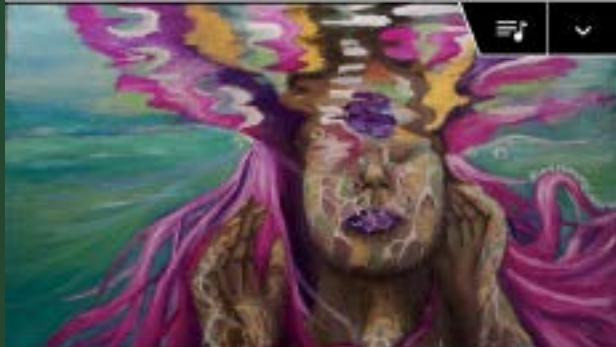


plusnet 12:06 52%
nts.live

NTS Schedule

1 ▶ SOUP TO NUTS W/ ROSS ALLEN

2 ▶ CONNOR GANI



CONNOR GANI
LONDON, 08.06.23

LIVE NOW
12:00 - 13:00

Connor Gani fills in for Sigourney playing a blend of ambient electronics and classical selections.

Instagram icon

Bookmark icon Heart icon Share icon **FIND MORE**



Get in touch

lauracwatson44@gmail.com

07813 158670

